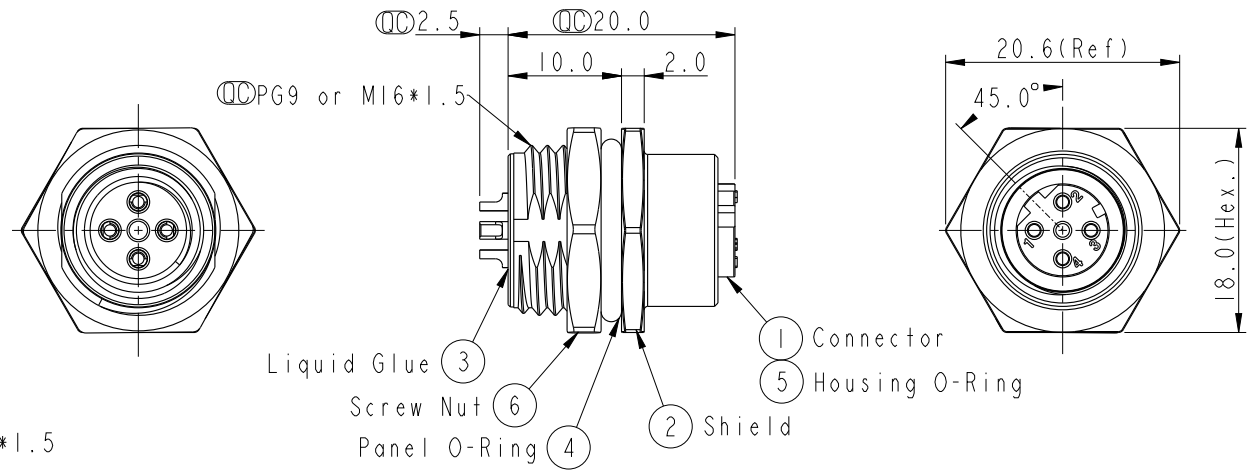
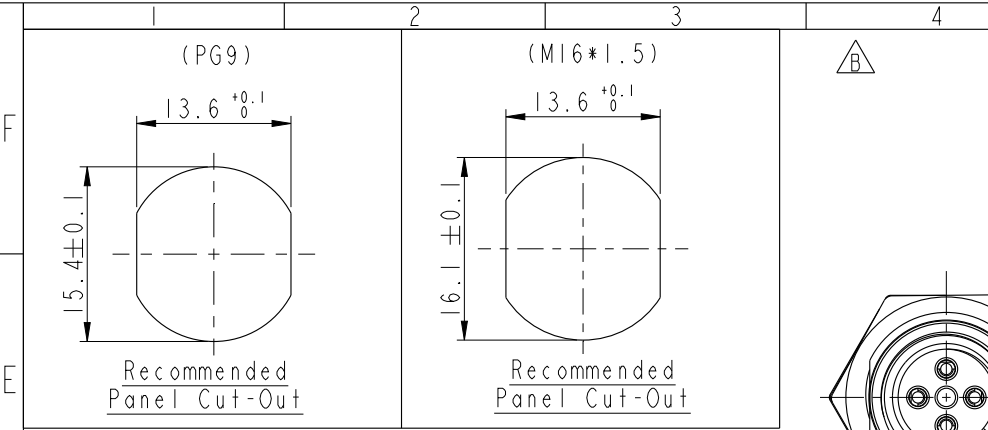


THIS DOCUMENT IS SUBJECT TO CHANGE WITHOUT NOTICE. IT IS CONFIDENTIAL AND A PROPERTY OF Amphenol LTW. DISCLOSURE TO THIRD PARTY HAS TO BE AUTHORIZED BY Amphenol LTW.

REV.	ECN NO.	DATE	SIGN	DESCRIPTION
B	LEN1580015-016	2015/07/24	Yulong_wang	Change to Share Drawing.
C	LEN1690143-144	2016/08/23	Yulong_wang	Add 3, 5 Pin & IP69K.

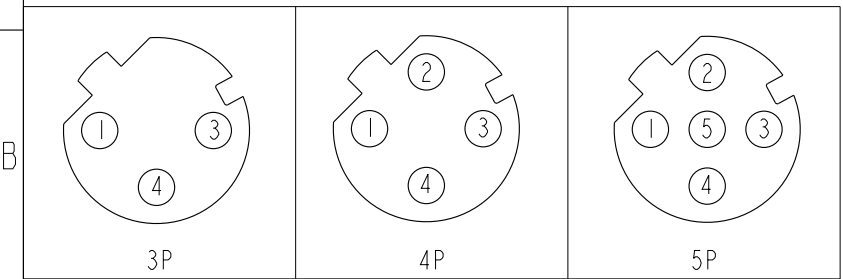


M I2D - XX P F F S - S H 8 XXX

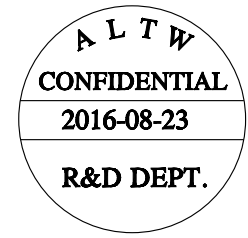
I2D: D-Code
 03: 3Pin
 04: 4Pin
 05: 5Pin $\triangle C$

P: Panel (板端)
 F: Female Connector (母座)
 F: Female Pin (母Pin)

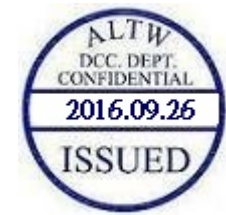
001: PG9
 002: M16*1.5
 8: IP68/69K (防水等級68/69K) $\triangle C$
 H: Rear Fasten (后鎖式/Enclosure Front Mount)
 S: Screw (螺紋式)
 S: Solder Type (焊接式)



Pin Assignment Front View



- Note:
- * ⌀ Important Dimension.
 - $\triangle C$ * Waterproof Rate: IP68, IP69K.
 - * Housing: Nylon+GF, Black.
 - * Female Pin: Copper Alloy, Gold Plated.
 - * Shield: Zinc Alloy, Nickel Plated.
 - * Screw Nut: Zinc Alloy, Nickel Plated.
 - * Panel O-Ring: Viton, Black.
 - * Housing O-Ring: Viton, Green.
 - $\triangle C$ * Rated Voltage: 3 & 4Pin 250V dc. or ac.
5Pin 60V dc. or ac.
 - * Rated Current: 4A
 - * Operating Temperature: -40~+105°C
 - * For Panel Thickness Max 4.5mm.
 - * Recommended Nut Torque: 4-6 Kgf.cm.



UNIT: mm		TITLE M12 D-Code Female Conn. Solder Rear Type
TOLERANCE .X ±0.25 .XX ±0.1 .XXX ±0.05 ANGLES ±1°	SCALE 2:1	SIZE A4
	REV. C	SHEET 1 OF 1
	WC-REV. A.5	⌀ : Inspection item

Amphenol LTW
 安費諾亮泰企業股份有限公司

ITEM NO.	DRAWN BY Yulong_wang	DATE 2016-08-23
DWG NO. M12D-XXPFFS-SH8XXX	CHECKED BY Jinhai	DATE 2016-08-23
CUSTOMER ALTW	APPROVED BY Jerry	DATE 2016-08-23