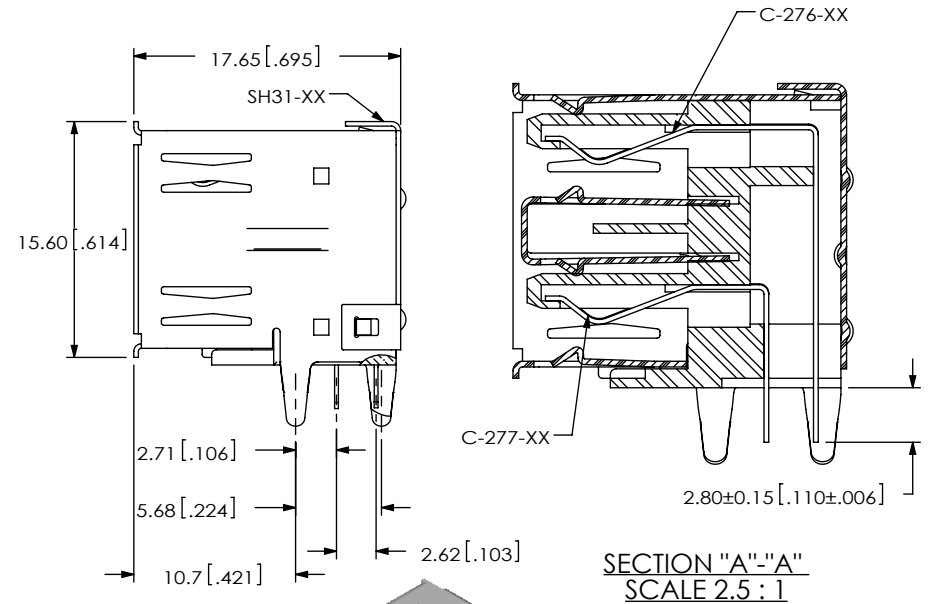
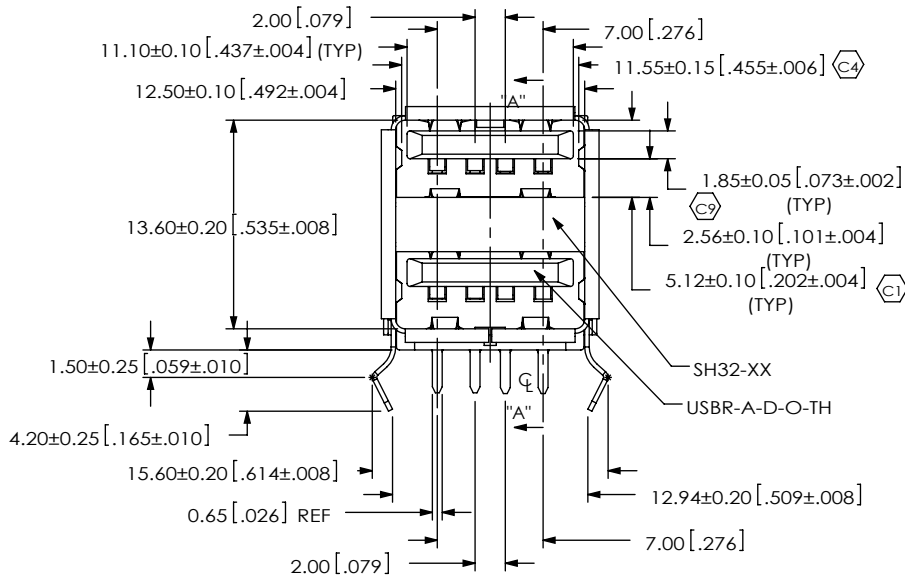
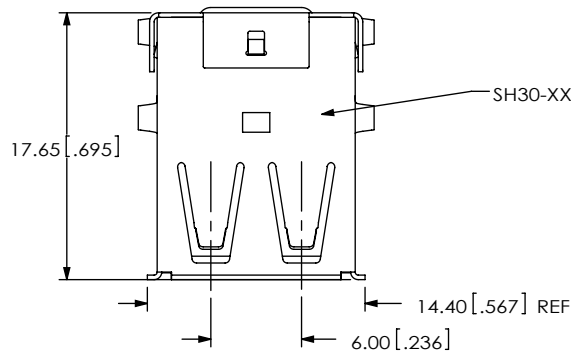


NOTES:
 1. $\text{\textcircled{C}}$ REPRESENTS A CRITICAL DIMENSION.
 2. PACKAGING IN TRAY.

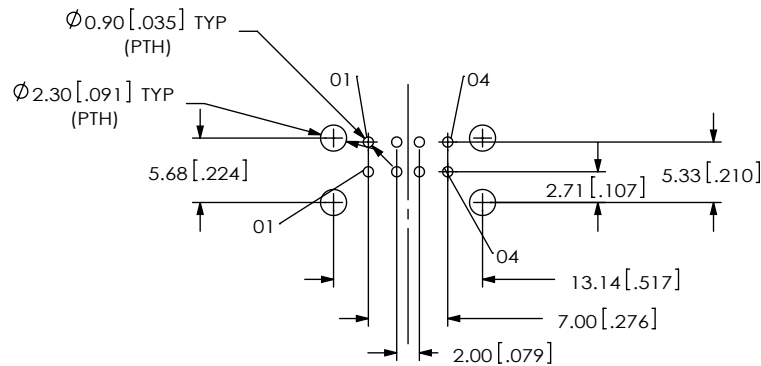
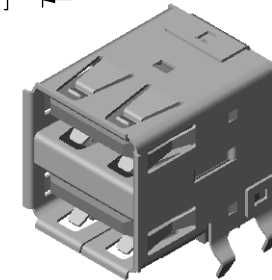
**DESIGNED & DIMENSIONED
 IN MILLIMETERS [INCHES]**

USBR-A-D-X-O-TH

TYPE ————
 -A
 ROW SPECIFICATION ————
 -D: DOUBLE ROW
 PLATING SPECIFICATION ————
 -F: 1 μ " FLASH GOLD ON CONTACT AREA,
 MATTE TIN ON TAIL
 -S: 30 μ " SELECTIVE GOLD ON CONTACT AREA,
 MATTE TIN ON TAIL
 OPTION ————
 -TH: THROUGH HOLE
 COLOR ————
 -O: ORANGE



**SECTION "A"-"A"
 SCALE 2.5 : 1**



RECOMMENDED PCB LAYOUT

UNLESS OTHERWISE SPECIFIED,
 DIMENSIONS ARE IN
 MILLIMETERS [INCHES].
 TOLERANCES ARE:
 DECIMALS ANGLES
 X.X: ±0.25 [.01]
 X.XX: ±0.13 [.005]
 X.XXX: ±0.05 [.002]

PROPRIETARY NOTE
 THIS DOCUMENT CONTAINS CONFIDENTIAL AND
 PROPRIETARY INFORMATION AND ALL DESIGN,
 MANUFACTURING, REPRODUCTION, USE, PATENT RIGHTS
 AND SALES RIGHTS ARE EXPRESSLY RESERVED BY SAMTEC,
 INC. THIS DOCUMENT SHALL NOT BE DISCLOSED, IN WHOLE
 OR PART, TO ANY UNAUTHORIZED PERSON OR ENTITY NOR
 REPRODUCED, TRANSFERRED OR INCORPORATED IN ANY
 OTHER PROJECT IN ANY MANNER WITHOUT THE EXPRESS
 WRITTEN CONSENT OF SAMTEC, INC.



520 PARK EAST BLVD, NEW ALBANY, IN 47150
 PHONE: 812-944-6733 FAX: 812-948-5047
 e-Mail: info@SAMTEC.com code: 55322

MATERIAL: DO NOT SCALE DRAWING SHEET SCALE: 2:1
 INSULATOR: PA9T, COLOR: ORANGE
 CONTACT: COPPER ALLOY
 SHELL: COPPER ALLOY

DESCRIPTION:
 HIGH RETENTION USB TYPE A DOUBLE ROW
 DWG. NO.

USBR-A-D-X-O-TH

BY: TOM TANG 12/30/2008 SHEET 1 OF 1